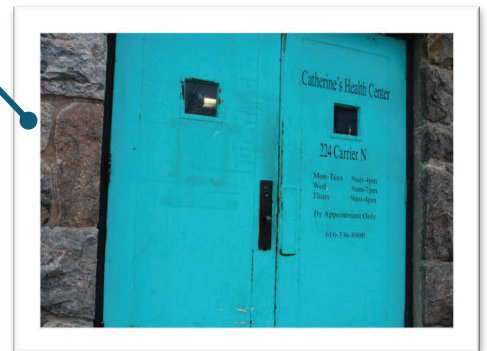
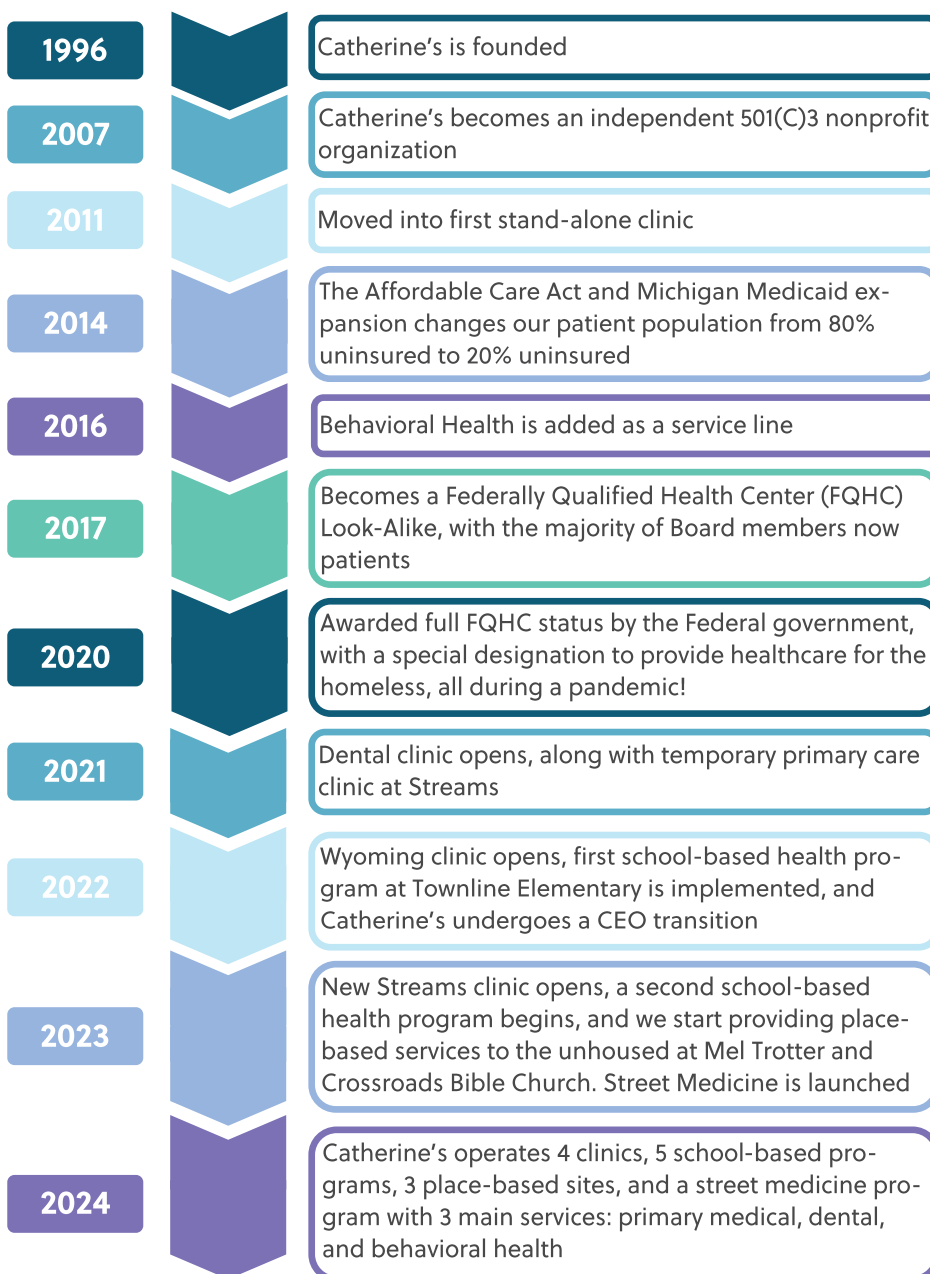


A RECAP

The Catherine's Story

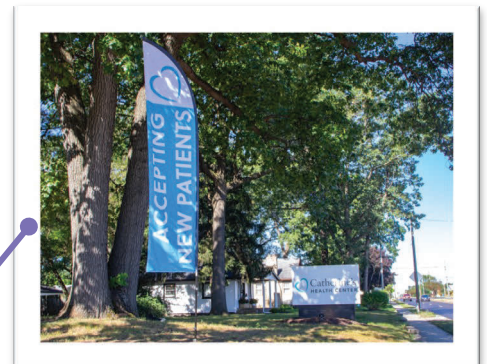
You may have noticed some changes at Catherine's over the last several years. While these changes have been positive, we know that they can also be overwhelming! For our supporters and friends like you, we wanted to break down what has happened, how you have been a part of it, and how we can continue to grow together.



Original doors of Catherine's Care Center



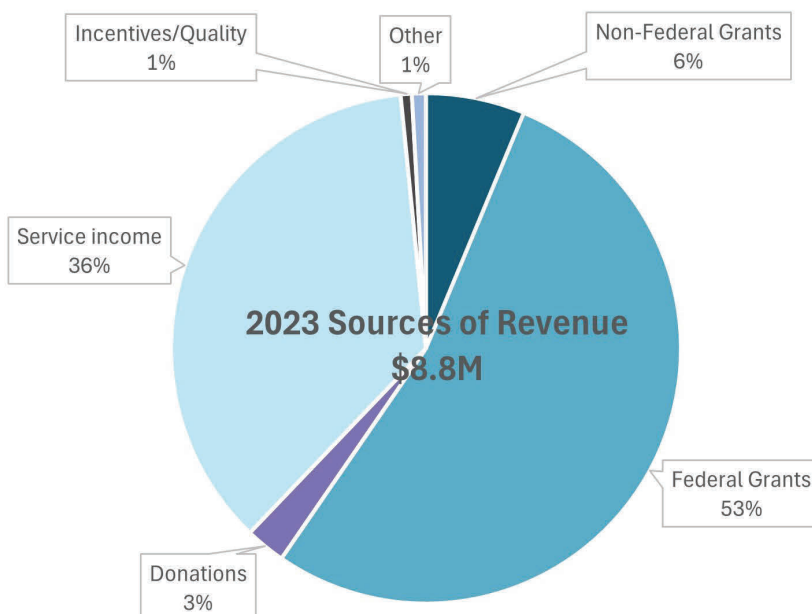
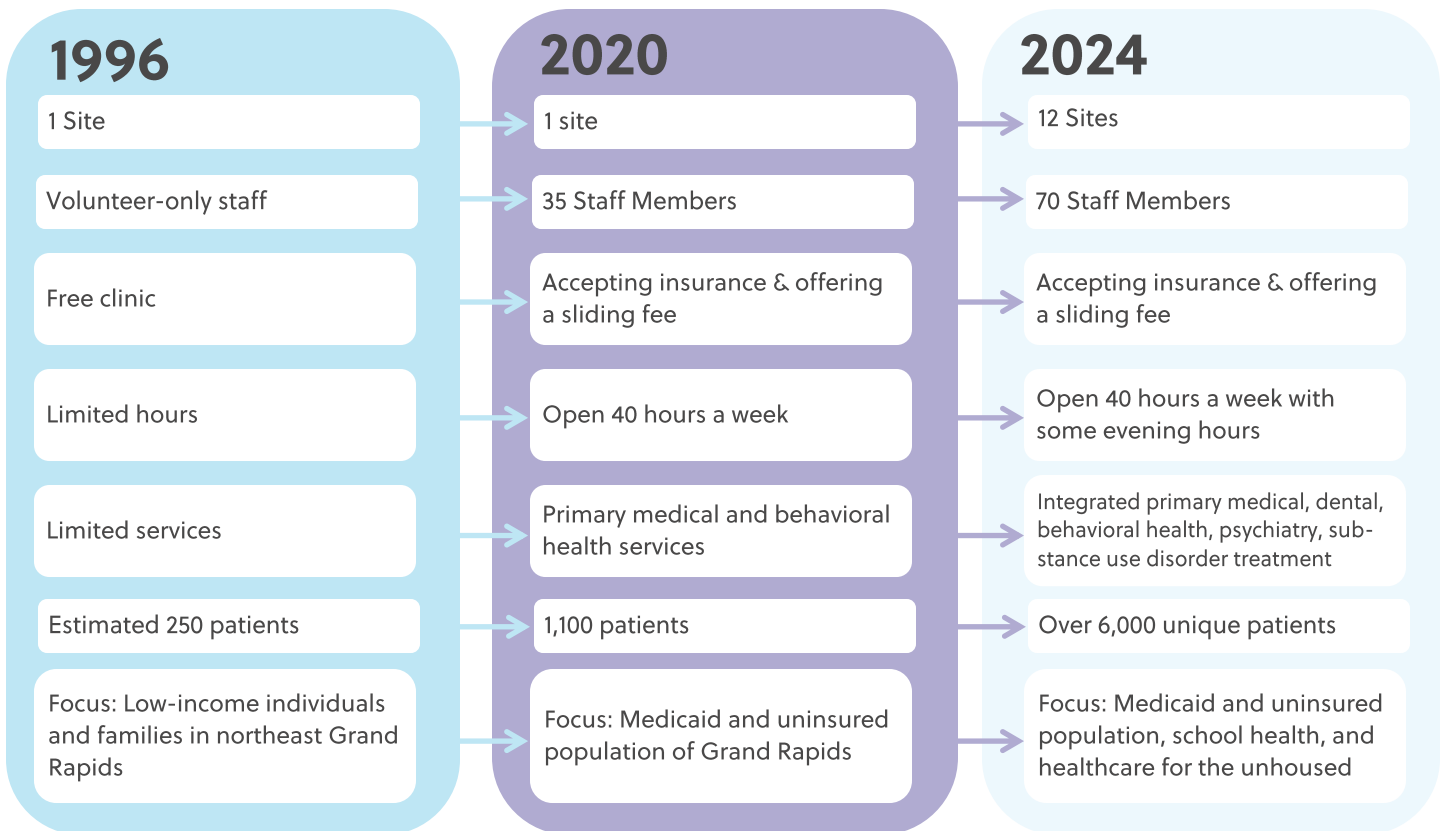
Megan Erskine (left) and Karen Kaashoek (right)



Wyoming clinic opening

THEN VS. NOW

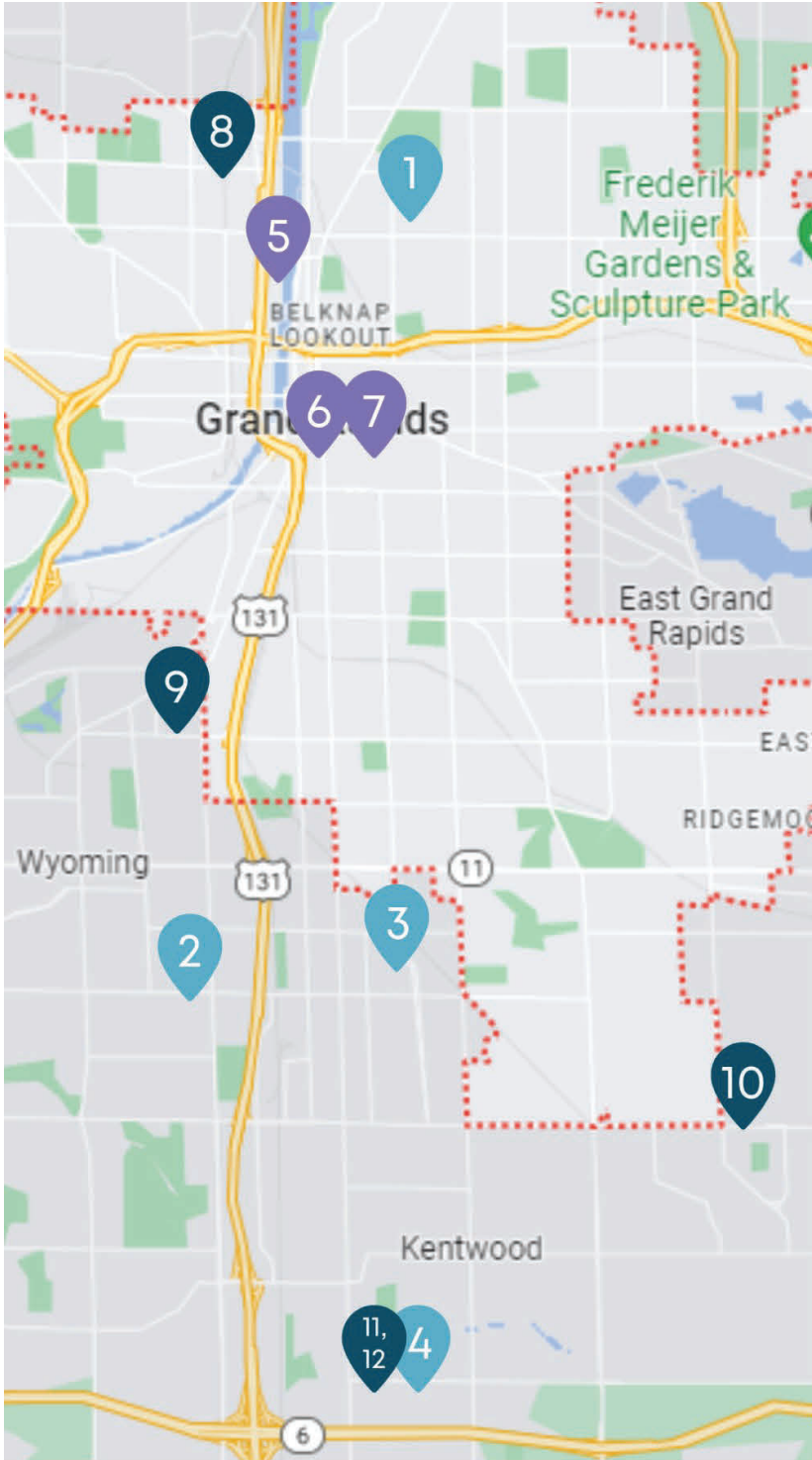
A lot has changed, especially in the last four years!



As Catherine's has grown and evolved, our primary sources of revenue have changed to meet those needs. As a community health center, we will always rely on the support of our community members! When you give to Catherine's, you allow us to say 'Yes!' to things we might not otherwise be able to. The impact of charitable gifts can be seen in our expanded unhoused services, providing health coaching for chronically ill patients, transportation to and from appointments, and supporting the Open Hearts Fund, which is available to patients above 200% FPL who don't qualify for sliding fee services. Your partnership allows Catherine's doors to remain open for ALL.

WHERE IS CATHERINE'S?

Embedded in the Community



Community Health Clinics

- 1 Creston**
Primary medical & behavioral health care
1211 Lafayette Ave NE
- 2 Wyoming**
Primary medical & behavioral health care
950 36th St SE
- 3 Dental**
Dental care
781 36th SE B
- 4 Streams**
Primary medical, behavioral health, & dental care
280 60th St SE #200

Place-Based Sites

Providing care to unhoused individuals at trusted partner sites

- 5 Crossroads Bible Church**
800 Scribner Ave NW
- 6 Mel Trotter Ministries**
225 Commerce Ave SW
- 7 Dégagé Heartside Landing**
129 Jefferson Ave SE

School-Based Health

Health care embedded in local schools for student health

- 8 Harrison Park Academy**
1440 Davis Ave NW
- 9 Godfrey Elementary School**
1920 Godfrey St SW
- 10 Crestwood Middle School**
2674 44th St SE
- 11 Towlne Elementary School**
100 60th St SE
- 12 Crossroads High School**
28 60th St SE



Street Medicine & Medical Outreach

Catherine's provides health care to individuals facing homelessness and is dedicated to meeting people where they are. You can find us providing medical outreach in partner spaces like Grand Rapids Public Library and Exodus Place, and even on the streets in Grand Rapids and Wyoming.



950 36th St SW
Wyoming, MI 49509

Non-Profit Org.
U.S. Postage
PAID
Grand Rapids, MI
Permit No. 404

About Catherine's Health Center

Catherine's Health Center is a 501(c)(3) non-profit Federally Qualified Health Center. Catherine's has provided high quality, affordable and compassionate health care for over 28 years. Through the changes and growth, our purpose has always remained: to meet the health care needs of the community by going to where the community needs health care. We treat all patients with the high quality and dignified care that everyone deserves.

Thank you for your support! **If you have any questions or would like to make a donation, contact:**

Ally Stephens, Development Director
(616) 336-8800 ext. 1206 | astephens@catherineshc.org

"I continue to give to Catherine's because I know that my support ensures that nobody falls through the cracks."

-Shelli Zomer, Catherine's Board President, patient, and 28-year supporter

Follow us!

 catherineshc.org

 facebook.com/CatherinesHealthCenter

 instagram.com/catherineshealthcenter